

THE HEALING VALUE OF ELLIMAN'S
 in the treatment of Aches and Pains is too firmly established to
 need pressing.



ELLIMAN'S Universal Embrocation, upon account of its curative properties, can be relied upon as the best remedy for Rheumatism, Lumbago, Sprains, Bruises, Sore Throat from Cold, Neuralgia from Cold, Cold at the Chest, Chronic Bronchitis, Backache, Cramp, Wounds, Stiffness, Soreness of the Limbs after Cycling, Football, Rowing, Golf, &c.

8½d., 1/11, 2/9, 4/-

JARS, 11/- and 22/-, direct only for P.O.
 (Jars are economical).

THE ELLIMAN R.E.P. BOOK

(Rubbing Eases Pain Handbook), 256 pages. Cloth Board Covers, Illustrated, 1/- post free to all parts of the world (foreign stamps accepted); or upon terms to be found upon labels affixed to cartons containing 1/11, 2/9 and 4/-

**ELLIMAN'S
 UNIVERSAL EMBROCATION.**

ELLIMAN, SONS & CO., Slough, England.

HANDBOOK

Crystal Palace Football Club
 1906-7.
 PRICE TWOPENCE.

Publishing Office:

34

WESTON STREET,

UPPER NORWOOD.

A. J. MOORE,

Proprietor.



TELEPHONE:

336

SYDENHAM.

TELEGRAMS:

IMPERIAL

UPPER

NORWOOD.

WEAR
GIBBERDS'
BOOTS.

The Most Comfortable.

LAST LONGEST.

TELEPHONE: 448 Sydenham.

56, Church Road, UPPER
 NORWOOD.

CRYSTAL PALACE THEATRE

LICENSER J. H. COZENS.
LESSEE J. BANNISTER HOWARD.
BUSINESS MANAGER J. B. SHARPE.

The above Theatre will RE-OPEN
On Monday, September 17th, 1906,

— WHEN —

MR. BEN GREET

will appear, supported by his COMPANY, in

"A Midsummer Night's Dream"

During the Season the following first-class Engagements have been made:—

ARE YOU A MASON?	THE PRIVATE SECRETARY
THE SILVER KING	THE BELLE OF NEW YORK
CHARLEY'S AUNT	THE PRINCE OF PILSEN
MR. HOPKINSON	THE EARL & THE GIRL
FOUR JUST MEN	THREE LITTLE MAIDS
MR. NORMAN V. NORMAN'S CO.	FLORODORA
SERGEANT BRUE	&C., &C.

An Amateur Performance of the GONDOLIERS.

GRAND XMAS PANTOMIME,

"ALADDIN."

PRICES OF ADMISSION—

FAUTEUILS	STALLS	STALLS (Unreserved)	PIT	GALLERY
3/-	2/6	1/6	1/-	6d.

Per. 38457 f. 38
1906-7

CRYSTAL PALACE FOOTBALL CLUB.

— SEASON 1906-7. —

Official Handbook.

Price TWOPENCE.

CRYSTAL PALACE

FOOTBALL CLUB, Ltd.

CAPITAL **£5,000.**

Divided into **5,000** Shares of **£1** each.

Directors :

SYDNEY BOURNE (Chairman), 4/17, Cranworth Gardens,
Brixton, S.W.

A. ST. P. CUFFLIN, 37A, Aberdeen Park, Highbury, N.

ARTHUR DANIEL, 71, Thornlaw Road, West Norwood, S.E.

THOMAS C. WALTERS, 66, Westow Hill, Upper Norwood, S.E.

CAPTAIN W. JAMIESON, 21, Anerley Grove, Anerley, S.E.

MARTIN DERISLEY, 58, Westow Hill, Upper Norwood, S.E.

Solicitor :

FRANK H. HOLMES, 32, Fenchurch Street, London.

Bankers :

THE LONDON & COUNTY BANKING CO., LTD.,
Upper Norwood Branch, S.E.

Auditors :

MESSRS. WHAMOND WILLIAMS & CO., 3, Crown Court,
Old Broad Street ; Chartered Accountants.

Secretary and Offices :

EDMUND F. GOODMAN

(Late Assistant Secretary to the Aston Villa Football Club),

From whom Share application forms may be obtained.

CRYSTAL PALACE, SYDENHAM, S.E.

Team Manager :

JOHN ROBSON

1906

Important.

The "GLAZIERS" Club Colours

IN

TIES, ROSETTES, ETC.

ARE SUPPLIED AS USUAL BY . . .

FRED BUTLER & SONS

The LEADING

COMPLETE OUTFITTERS.

MERCHANT TAILORS.

JUVENILE OUTFITTERS.

HOSIERS, HATTERS.

SHIRT MAKERS.

GLOVERS, ETC., ETC.

LOWEST CITY PRICES.

69-71, Westow Hill, Upper Norwood, S E.

CONTENTS.



Crystal Palace Football Club Limited	2
Introductory Notes	5
Resume of Season 1905-6	8
Results of Season 1905-6	15
How They Finished	16
Portraits of—	
Last Season's Team	17
Directors	19
This Season's Team	27-29
Snapshots	55-56
Prospects for 1906-7	22
First Team Fixtures	33
Reserve Team Fixtures	47
London League	26
International Matches	26
Football Cup Exemptions	31
Sydenham and District League	31
Dulwich League	31
English Cup Dates	45
Full List of—	
Southern, United, and London League Fixtures	49
Southern League 1905-6	57
Extracts from Laws of Game with comments	58
A Few General Hints	62
Records and Facts	63

Introductory

Notes. . . .

THE writer of these brief notes in this, the first handbook of the Crystal Palace Football Club, writes with hearty congratulations to the Directors and their Officers for having so triumphantly surmounted most of the difficulties which beset them in the days immediately succeeding the Club's formation. After being compelled to resort to the Second Division of the Southern League throughout its first season, the Palace Club now ranks amongst the leading football organisations of the South of England, having been promoted to the First Division purely on its merits. The way is now paved for a fulfilment of the prophecy of Mr. W. McGregor (Father of the League) who wrote in the "Football Star" in December 1904 as follows:—

"The high water mark of prosperity in the Metropolis has not been reached, and I believe a really good team at the Crystal Palace would be a tremendous draw, and that the Club would get a regular following."

Naturally, that following could not be commanded whilst the Club laboured under last season's serious disadvantages, but a complete change is bound to follow promotion. Mr. McGregor must have had in mind the numerous and populous suburbs round the Palace when contemplating a great following for a first-class team, with headquarters at the Palace; in fact, there

is only one other organisation engaged in First Division Football, South of the Thames, viz., Woolwich Arsenal. Therefore the Crystal Palace Club is left with a clear field, and it is earnestly hoped that the officials will zealously continue to do their utmost to provide football of the high standard which characterised the Club's playing last season and thus reap the harvest which awaits them, and that the promises of success will be fully realised during this present season.

Thanks are due to Messrs. Russell and Sons, photographers, Crystal Palace; Mr. E. F. Goodman, secretary to the Crystal Palace F.C.; and to Mr. J. Robson, manager to the Crystal Palace F.C., for their ready and valuable assistance in the compiling of this publication.

Footballers!

In order to have a presentable appearance when entering the ground it is necessary to be attired in a clean Suit, therefore, always take care that you send your soiled ones to the

Eureka Laundry,

33 & 35, Woodland Hill, Upper Norwood.

Also take care, that, on leaving the ground, you present a dignified appearance by donning Shirts and Collars dressed at the same Establishment.

SHIRT and COLLAR DRESSING a Speciality.

Crystal Palace Dairy.

PURVEYOR OF
HIGH-CLASS DAIRY
PRODUCE Only.

Thomas French,

72 & 74,
GIPSY HILL,

Upper Norwood, S.E.

SPECIAL HERD of
Jersey Cows

MILKED ON
THE PREMISES
for INVALIDS and all
NURSERY Purposes.

UNDER STRICT
MEDICAL
AND VETERINARY
SUPERVISION.



Telephone 772 Sydenham.

Resumé of the Season 1905-6.

Towards the end of August 1905, 16 professional footballers were engaged in a practice match on the famous final tie ground at the Crystal Palace. Most of them had come from the north country, the home of football, where the great winter game reigns supreme and where hundreds of thousands follow it with enthusiasm almost as keen at the commencement of the season, at a mere practice, as later, when the struggles for League or Cup are engaging their attention. But here in the sunny south, or at least in the south-eastern portion of the Metropolis, matters were different, and less than a dozen spectators were present. That small gathering included the Directorate, Manager, Secretary and Trainer of the newly-formed Crystal Palace Football Club. Certainly it was a poor outlook for the organisation, but the new venture ignored that trifling disappointment and set to work, determined to leave nothing to chance.

After a little practice the players retained were: Goal, R. Hewitson; backs, G. Walker, M. Edwards and A. Grant; half-backs, W. A. Innerd, E. L. Birnie and H. Astley; forwards, G. Thompson, C. W. Wallace, R. Harker, W. M. Watkins, R. Ross, A. Needham and R. J. Roberts.

The opening day of the season found the Palace team engaged with New Brompton at the latter town in a United League match. When it became known that the players from the Palace had secured a well deserved victory of 3—0 it was considered that Manager Robson had got together a really clever side. But a rapid check was received at the Palace the following day when Southampton Reserves snatched a victory by 4—3 in the Southern League second division. At one stage of the game the Palace side were enjoying three goals lead, and the falling away can only be attributed to the fact that less than 24 hours had elapsed since the New Brompton match was in progress. But their high standard of play delighted the spectators. No less than seven further matches were played by the team during the month of September—truly an arduous task. Only ordinary success was achieved, principally owing to weak shooting. A published appeal by Mr. Cufflin, one of the directors, to residents who admired the game to

*“make the club their own, watch its doings and
“rejoice in its victories,”*

was not realised immediately. The success had not been sufficiently consistent to effectually arouse local interest, and coupled with this was the glaring fact that most of the matches were in the second division. But the first round of the league ladder had been reached at the expense of Swindon Reserves. Birnie, the captain, on one occasion remarked

*“We must win nearly every Southern League match
“and then they will have to have us in the First
“Division.”*

Apparently this served as the "battle cry" throughout the remainder of the season, for no subsequent second division contest was lost, the most distinguished success in the early portion of the season being against Fulham Reserves (league champions the previous season) who were trounced at the Palace by 5-0.

Numerous successes were being gained and from Sept. 30th to Nov. 18th ten consecutive victories were registered, and included in this list of victims were Brighton and Hove Albion and Swindon, the latter experiencing a sweeping defeat by 6-1.

The Palace Club had to be content by making an humble start in the English Cup competition, and Clapham and the 2nd Grenadier Guards were each defeated by them in division 19. The concluding match in the division was against Chelsea, but to the disappointment of the Palace supporters this successful London Club sent their second team to Sydenham and suffered heavily for their policy, losing by 7-1. Luton were defeated at the Palace in the same competition and thus the Glaziers—for this had become a popular name for the Palace team—entered the competition proper, being drawn against Blackpool at the northern watering place. A draw of 1-1 resulted and the return at the Palace produced a similar score, after extra time had been played. The Glaziers had to pay dearly for this return H. Astley being injured so badly that he was practically unable to play for the remainder of the season. The game was a triumph for Edwards, who, playing single handed at back, defied all the opposition of Blackpool, a performance which impressed all who witnessed it, whilst Birnie was ever at hand when occasion demanded. A further replay at Birmingham gave Blackpool the victory by 1-0.

BRIGGS'

— No. 1 —

VIRGINIA

CIGARETTES

1/6 per Box of 50.

3/- per Box of 100.

POST FREE, 1/7 per Box of 50.

„ „ 3/2 per Box of 100.

These Cigarettes are guaranteed Hand Made from
ABSOLUTELY PURE VIRGINIA TOBACCO.

To be obtained only of _____

CHARLES BRIGGS,
Cigar Importer,

REGENT HOUSE,

59, WESTOW HILL,
Upper Norwood, London, S.E.

RESULTS OF ALL THE "GLAZIERS" MATCHES
ANNOUNCED at THIS ESTABLISHMENT.

In the last two matches with Blackpool the Glaziers forwards were below par and this was responsible for the team having to take their exit from the competition at such a vital period, vital from a financial point of view because the winners of the round were drawn against Sheffield United and the benefits accruing from that draw were fully enjoyed by Blackpool. But the Cup competition did a great deal in bringing the Glaziers into prominence.

With the chances for further advance in the competition dismissed, the club's attention was keenly re-directed to the premiership of the Southern League (Division II). Therein were possibilities, which, if realised fully, would eventually ensure for the club a manifestly richer harvest than the one of somewhat mushroom growth, which might have resulted with further success in the battle for the Cup.

As the season advanced it was evident that the adverse criticism passed upon the team during its infant days was on the wane and it was generally agreed that they were a capable team and that it was indeed their misfortune to be compelled to struggle for the most part in second division circles. The "gates" at the beginning of 1906 were showing a substantial improvement, fully 4,000 attending the most attractive matches. Norwich City had been added to the rôle of defeated Southern League 1st division clubs in a friendly at Norwich, making five in all. New Brompton and Luton were also defeated again in the return United League games, but Brighton and Hove Albion managed to turn the tables and Swindon drew, whilst Watford gained the distinction of being the only team to defeat the Glaziers twice.

Meanwhile the matches in the Southern League were being most successfully contested, and from

October 14th to April 7th no less than 17 consecutive victories were gained, eight of which were on their opponents' ground. During the whole of that period (October to April) they were engaged in a neck to neck race with Leyton for premier position, the latter holding it for the most part by reason of retaining a game in hand, but the teams met on April 7th when the championship was decided, the Palace team winning by 2—1. This match also commenced a new era in connection with the club as hundreds of supporters accompanied their favourites to Leyton, proving that the game had, to use a common term, "caught on" in the large suburbs around the Palace.

In the United League the Glaziers finished a strong second and only three points behind Watford, the champions.

Rarely indeed has a club established a better record in its first season than did the Palace club, and it was brought about by the all round hard work of each player. Throughout the season Birnie proved a worthy leader and he had a clever and unselfish team to lead who could always be relied upon to play a clean and fast game, and a Luton critic has written that what helped them on to success more than anything else was

*"their smartness in getting on the ball and their speed
"in getting away with it."*

A word should be added in appreciation of the services of two local players, viz., A. Wilson and L. Woodger, who frequently assisted the club in its victorious career.

The Well-dressed MAN

WEARS

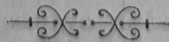
Thomas's HATS,
 Thomas's SHIRTS,
 Thomas's TIES,
 Thomas's GLOVES, &c.

BUY AT

'The Popular Stores,'
 1, WESTOW HILL,
 Upper Norwood, S.E.

ALWAYS REMEMBER—

“At top corner of GIPSY HILL.”



“Glaziers” Colours
 IN STOCK.

RESULTS OF SEASON 1905-6.

Date.	Opponents.	Where Played	League	Goals For Agst
Sept. 1	New Brompton	A	L	3
" 2	Southampton Res.	H	L	4
" 6	Watford	A	U	0
" 9	Eltham	H	F	1
" 16	Swindon Reserves	A	S	1
" 18	West Ham Res.	A	S	0
" 21	Fulham	A	F	1
" 23	Leyton	H	L	0
" 30	Grenadier Guards	H	F	1
Oct. 7	Clapham	H	L	0
" 11	Brighton and Hove	A	E	1
" 14	Fulham Reserves	H	L	3
" 18	Grays United	A	S	0
" 21	Southern United	H	L	6
" 28	Grenadier Guards	A	S	1
Nov. 1	Swindon	A	E	3
" 4	Grays United	A	L	6
" 11	Luton	A	L	1
" 18	Chelsea	H	F	1
" 20	Clapton Orient	A	E	0
" 22	Brighton and Hove	H	L	1
" 25	Watford Reserves	A	L	1
" 30	Norwich City	A	F	2
Dec. 9	Luton	H	L	1
" 13	Reading Reserves	A	E	0
" 16	Newcastle United	H	L	3
" 23	Swindon Reserves	H	F	2
" 25	Leyton	A	L	3
" 26	Portsmouth Reserves	H	L	2
" 30	Watford	H	L	1
"	"	"	"	2
"	"	"	"	3

Date.	Opponents.	Where Played	League	Goals For Agst
1906.	Wycombe Wanderers	A	S	4
Jan. 6	Blackpool	A	E	1
" 13	Blackpool	H	C	1
" 17	St. Leonards United	H	L	1
" 20	Blackpool	H	E	3
" 22	Southern United	Bhm	S	0
" 24	Grays United	A	L	4
" 27	Croydon	A	S	0
Feb. 3	West Ham Reserves	A	F	4
" 10	Clapton Orient	H	L	0
" 14	Luton	H	L	3
" 19	St. Leonards United	A	L	5
" 21	West Beckenham	H	L	1
" 24	Southern United	H	L	2
" 28	Watford Reserves	H	L	0
Mar. 3	Swindon	H	L	0
" 7	Southampton Res.	A	L	1
" 10	Luton	H	L	0
" 17	Reading Reserves	A	L	2
" 24	New Brompton	H	S	1
" 26	Woolwich Arsenal	A	F	3
" 31	Leyton	A	L	2
April 7	Portsmouth Reserves	A	S	1
" 13	Wycombe Wanderers	A	L	0
" 16	Leyton	A	L	4
" 17	Fulham Reserves	H	L	2
" 23	Southern United	H	L	1
" 25	Grays United	A	L	2
" 30	Luton	A	F	0

A—Away, H—Home, U.L.—United League, S.L.—Southern League, E.C.—English Cup, F—Friendly.

How They Finished.

SOUTHERN LEAGUE (DIVISION II.)

	P.	W.	L.	D.	Goals		Pts.
					For.	Agst.	
CRYSTAL PALACE ...	24	19	1	4	66	14	42
Leyton ...	24	16	2	6	61	18	38
Portsmouth Reserves ...	24	12	4	8	52	24	32
Fulham Reserves ...	24	11	7	6	52	39	28
Southampton Reserves ...	24	7	8	9	39	41	23
Southern United ...	24	8	9	7	45	49	23
St. Leonards United ...	24	9	11	4	54	50	22
Watford Reserves ...	24	8	11	5	43	47	21
West Ham Reserves ...	24	7	12	5	46	48	19
Grays United ...	24	8	13	3	24	77	19
Reading Reserves ...	24	6	13	5	36	49	17
Swindon Reserves ...	24	5	14	5	36	51	15
Wycombe Wanderers ...	24	5	16	3	36	83	13

UNITED LEAGUE.

	P.	W.	L.	D.	Goals		Pts.
					For.	Agst.	
Watford ...	18	13	1	4	49	15	30
CRYSTAL PALACE ...	18	13	4	1	51	21	27
Leyton ...	18	8	6	4	33	31	20
Luton ...	18	7	7	4	47	27	18
Clapton Orient ...	18	5	5	8	24	27	18
Swindon ...	18	7	8	3	33	29	17
Brighton & Hove Albion ...	18	6	8	4	28	28	16
New Brompton ...	18	7	9	2	26	27	16
Grays United ...	18	4	12	2	21	64	10
Southern United ...	18	3	13	2	21	64	8

COLLATED RESULTS.

	P.	W.	L.	D.	Goals.		Pts.
					For.	Agst.	
Southern League (Division 2) ...	24	19	4	1	66	14	42
United League ...	18	13	1	4	51	21	27
Cup Ties ...	7	4	2	1	20	4	4
Friendlies ...	10	7	3	0	35	7	7
All Matches ...	59	43	10	6	172	46	46

CRYSTAL PALACE F.C.—GOAL SCORERS, SEASON 1905-6.

Needham ... 31	Thompson ... 7	Ross ... 3
Watkins ... 28	Innerd ... 6	Edwards ... 1
Woodger ... 21	Birnie ... 5	Bradshaw ... 1
Harker ... 19	Walker ... 4	Brydon ... 1
Roberts ... 18	Astley ... 4	Moody ... 1
Wallace ... 17	Grant ... 4	White ... 1

Total - 172

LAST SEASON'S TEAM.



Reading from right to left—Back Row: Mr. J. Robson (Manager), Mr. T. C. Walters, Mr. A. Daniels (Directors), J. Thompson, W. Oliver, A. Grant, R. Ross, H. Astley, M. Edwards, Mr. A. St. P. Cuffin, Mr. Sydney Bourne (Directors), Mr. E. F. Goodman (Secretary), Mr. A. Birch (Trainer). Second Row: G. Thompson, R. Hewitson, A. Needham, W. M. Watkins, E. L. Birnie, W. A. Innerd, G. Walker, R. J. Roberts. Front Row: R. Harker, C. W. Wallace.



THE DIRECTORS.

J. ETHERINGTON,

THE LEADING . . .

TAILOR,

26, Church Road, UPPER NORWOOD.

AND AT

£2, High Street, SUTTON, SURREY.

PRICE LIST.

Suits	from 50/- to £4 4 0
Dress Suits	„ 73/6 to £6 6 0
Morning Coat and Vest	„ 42/- to 70/-
Trousers	„ 13/6 to 25/-
Breeches	„ 25/- to 50/-
Ladies'	{ Costumes £3 3 0
	{ Riding Costumes	... from £4 4 0
	{ Riding Trousers, etc...	„ £1 1 0

ALL GARMENTS MADE ON THE PREMISES.

Workroom open for inspection at any time.

PATTERNS AND PRICES BY RETURN OF POST.

Prospects.

There are three outstanding indications that the season 1906-7 will be an exceedingly bright one, viz., eight of last season's professionals are remaining with the Club; the strongest teams of the South of England will be competed with; and the venue of all home matches will be the famous Final Tie ground at the Crystal Palace. Each point could be considerably enlarged upon with advantage. Space, however, vetoes any attempt at exhaustive detail, and brevity must be aimed at. The eight players referred to are R. Hewitson (goal), M. Edwards (back), W. A. Innerd and H. Astley (half-backs), R. J. Roberts, A. Needham, C. W. Wallace and R. Harker (forwards), whilst A. Wilson and L. Woodger, the two amateurs who rendered great assistance last season, have again signed, the latter having taken up the yoke of professionalism. As a predominant factor in the great success achieved in the Club's initial season was the team's remarkable cohesion, such announcement must be regarded as wholly satisfactory.

The new players at present engaged are :—T. Wills (back), late Newcastle United; H. Menzies (back), late Arthurlie, Scotland; W. Forster (half-back), late Sheffield United; W. Ledger (half-back), late Sunderland; W. Weston (centre-forward), late Southwick, Sunderland; and J. Hodgkinson (forward), late Bury.

It would be entirely out of place to write in an optimistic vein of the new players, but suffice it to say they are men of real merit, selected by the management with a sense of responsibility in preparing

for first division football. Last season's team did remarkably well and as the same management is still retained, confidence can be placed in the selections.

The teams visiting the Palace this season will include Southampton, Tottenham Hotspur, Chelsea, Portsmouth, Fulham, Queen's Park Rangers, Millwall, Reading, Watford, West Ham United, Norwich City, Luton, Brighton and Hove Albion, Northampton, Swindon, New Brompton, Brentford, Leyton and Plymouth Argyle. The Leagues entered by the Palace Club are the Southern League (1st division) and United League for the first team, whilst the Reserve team—for a second string is, of course, essential—will be engaged in the London League. This leads up to the third point as to why the prospects are bright—at least one match will be assured at the Palace every week, and football enthusiasts generally will have ample opportunities of witnessing football of the highest order and *under conditions second to none in the Kingdom*. The beautiful Palace grounds which surround the playing enclosure and the Palace itself (with its numerous attractions), will be accessible to visitors to the matches, and all for the special low charge to the Palace on match days—two hours before the commencement of the game—of Sixpence. All patrons of the Club should endeavour to induce their friends to attend the matches and thus co-operate with the officials in contributing their quota to the success of the season, bearing in mind, that, however successful a team may be it is impossible to maintain first-class football except it be supported by a large and loyal following.

It is further satisfactory to record that a large number of local players have responded to the appeal of Mr. J. Robson, the manager, and have given in their

names in order to take part in the practice games with a view to gaining a position in the Reserve team.

Mr. E. GOODMAN'S (Secretary) Opinion:—

"I consider that the Crystal Palace Football Club should in time get as big a following as any club in the South, or even in England, that is if our team is fairly successful from a playing point of view. To prove this I would point to the attendances at the various Final Ties which have been played on our ground, when from 60,000 to 110,000 persons have attended annually. Now, with all due respect to the visiting teams which have from time to time appeared in the Final, we know that they always bring a large following, but, at the same time, amongst the large crowd there are always thousands of South Londoners, which shows that if you provide them with first-class football they will support it. There are just as good sportsmen in the South as there are in the North and Midlands, in fact, the Southerner as a rule spend more individually on football than the Midlander or Northerner."

Mr. J. ROBSON'S (Manager) Opinion:—

"Am looking forward to season 1906-7 with every confidence. No 'Stars' have been engaged, but with a well balanced team, all pulling together, we hope our position in the Southern League table (1st division) will be a credit to the Club. Good support is the only thing now necessary to enable the Club to keep its position amongst the leading London teams."

Mr. BIRCH (Trainer) says:—

"Am pleased with the physical bearing of the players under my care."

Royal Crystal Palace Hotel,

Facing CRYSTAL PALACE,

Near SOUTH ENTRANCE.

Luncheons, . .

. . Teas, . .

. . . Suppers

BILLIARDS

(TWO TABLES.)

BED & BREAKFAST from 4/-

LONDON LEAGUE, 1905-6.

Premier Division.

	P.	W.	L.	D.	Goals			Pts
					F.	A.		
Fulham	14	8	1	5	26	11	—	21
Tottenham Hotspur ...	14	7	2	5	28	15	—	19
Queen's Park Rangers ...	14	7	3	4	31	11	—	18
Woolwich Arsenal ...	14	7	4	3	37	21	—	17
Leyton	14	4	5	5	23	22	—	13
West Ham United ...	14	4	7	3	14	24	—	11
Clapton Orient	14	3	10	1	14	37	—	7
Brentford... ..	14	2	10	2	11	43	—	8

INTERNATIONAL MATCHES.

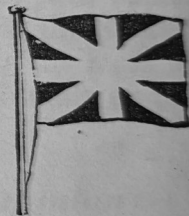
- February 16.—At Goodison Park, Liverpool, England v Ireland.
 February 23.—In Ireland, Ireland v Wales.
 March 4.—In Wales, Wales v Scotland.
 March 16.—In Scotland, Scotland v Ireland.
 March 18.—At Craven Cottage, Fulham, England v Wales.
 April 6.—At St. James' Park, Newcastle, England v Scotland.

FOOTBALLERS

LOOK for the Flag

... AT ...

59 WESTOW STREET,



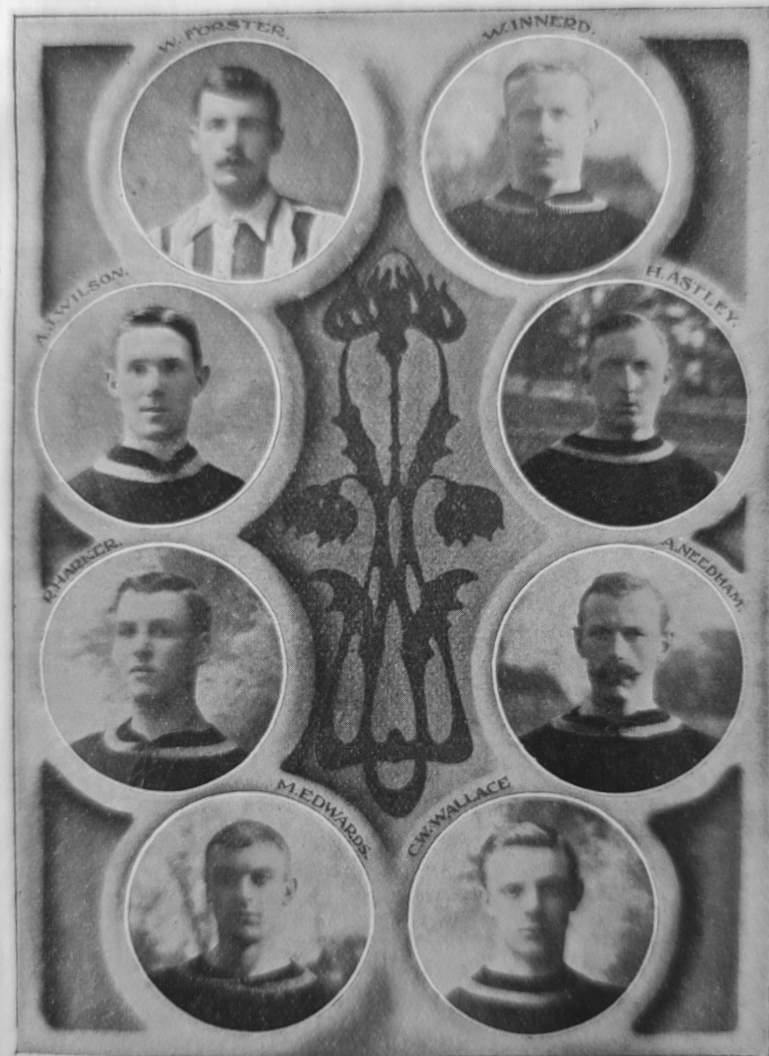
J. MAUNTON'S
COFFEE & DINING ROOMS,
 (Second turning on the right up Church Road from Crystal Palace.)

DINNERS.

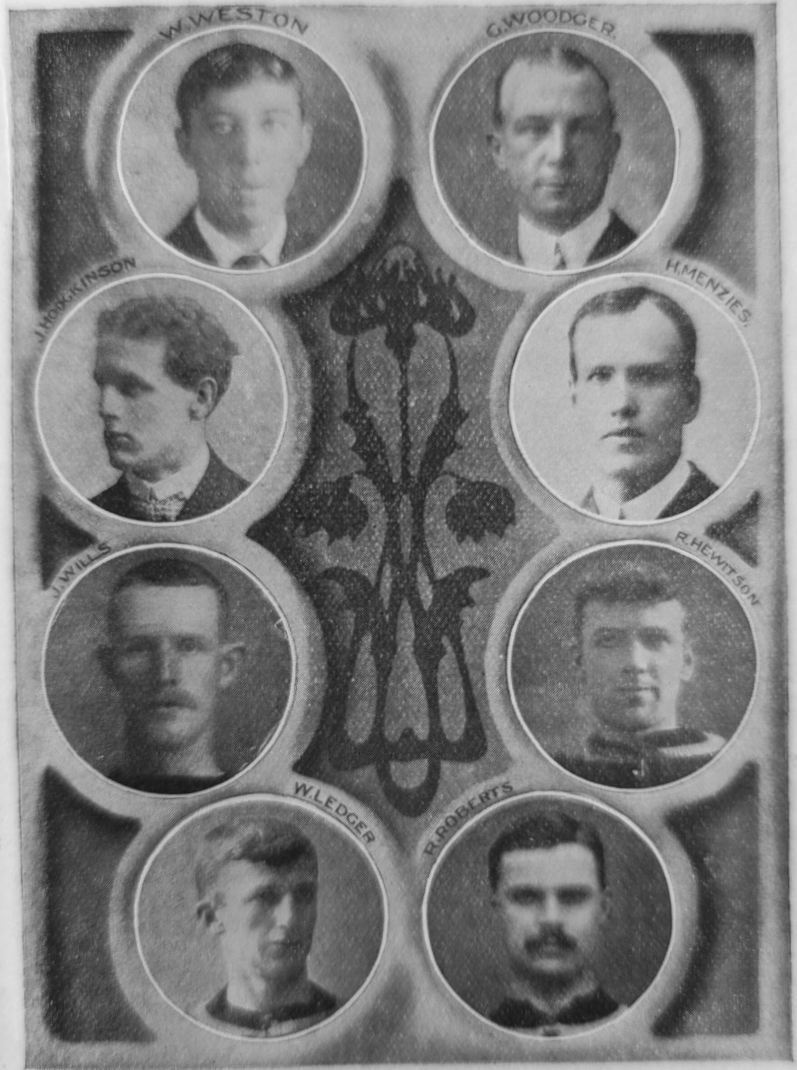
CUT FROM JOINT
 WITH TWO VEGETABLES.

6d.

TEAS.



THIS SEASON'S PLAYERS.



THIS SEASON'S PLAYERS.

FOOTBALL CUP EXEMPTIONS.

The following forty-eight clubs have been selected for exemption from the Association Cup Qualifying Competition, inclusive of last season's semi-finalists:—

Aston Villa, Bury, Blackpool, Birmingham, Bristol City, Blackburn Rovers, Brighton and Hove Albion, Bristol Rovers, Bolton Wanderers, Barnsley, Brentford, Bradford City, Burnley, Chelsea, Chesterfield, Derby County, Everton (holders), Fulham, Grimsby Town, Gainsborough Trinity, Hull City, Leeds City, Luton, Leicester Fosse, Lincoln City, Liverpool, Manchester City, Manchester United, Middlesborough, Millwall, Notts Forest, Notts County, Norwich City, Newcastle United, New Brompton, Oxford City, Plymouth Argyle, Portsmouth, Preston North End, Queen's Park Rangers, Reading, Sheffield Wednesday, Stockport County, Stoke, Sheffield United, Sunderland, Southampton, Tottenham Hotspur, West Bromwich Albion, West Ham, Wolverhampton Wanderers, Woolwich Arsenal.

The following twelve are exempted until the last round of the qualifying competition:—

Accrington Stanley.
Bishop Auckland.
Burton United.
Crewe Alexandra,
CRYSTAL PALACE.
Glossop.

Northampton.
New Crusaders
Burslem Port Vale.
Stockton.
Swindon.
Wattford.

Altogether, a record entry of 306 clubs has been received, as against 278 last season.

DULWICH LEAGUE.

Founded 1899.—Hon. Sec : W. J. Marriott, 118, Casewick Road, West Norwood. Present champions: Premier Division, Crown United; Division I., Anerley Swifts and Leigham United (joint holders); Division II, Streatham Centrals and Herne Hill Avondale (joint holders).

SYDENHAM and DISTRICT LEAGUE.

Founded 1900.—Hon. Sec.: Alfred Ellis, 54, Wells Road, Sydenham, S.E. Present champions; Premier Division, Hither Green Old Boys; Division I., Anerley Swifts.

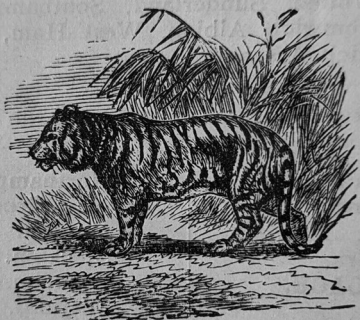
A. J. TURNER,

CHEMICAL CLEANER,

ART DYER

PRACTICAL FURRIER.

Licensed by the
London County
Council for
Work to be done
on the Premises.



Licensed by the
London County
Council for
Work to be done
on the Premises.

GENTS' CLOTHES CLEANED
and TAILOR PRESSED.

Football and Cricket Flannels
cleaned in TWO DAYS.

GLOVES CLEANED DAILY.

38, GIPSY HILL, S.E.

FULL LIST-FIRST TEAM FIXTURES, 1906-1907.

DATE.	OPPONENTS.	LEAGUE	WHERE PLAYED
Sat., Sept. 1	Northampton	S	H
Sat., " 8	Queen's Park Rangers	L	A
Wed., " 12	Chelsea	F	H
Sat., " 15	Fulham	S	H
Wed., " 19	Reading	S	A
Sat., " 22	Southampton	L	H
Sat., " 29	West Ham	S	A
Sat., Oct 6	Tottenham Hotspur	L	H
Mon., " 13	Luton	L	H
Sat., " 17	Swindon	S	H
Sat., " 20	Watford	L	A
Sat., " 27	Norwich City	S	H
Wed., " 31	Luton	L	A
Sat., Nov. 3	Bristol Rovers	S	H
Wed., " 7	Brighton & Hove Albion	L	A
Sat., " 10	Brentford	S	H
Mon., " 12	New Brompton	S	H
Sat., " 17	Millwall	S	H
Wed., " 21	Watford	L	A
Sat., " 24	Leyton	L	A
Wed., " 28	Norwich City	S	H
Sat., Dec. 1	Portsmouth	L	A
Sat., " 8	New Brompton	S	H
Sat., " 15	Plymouth Argyle	S	H
Sat., " 22	Brighton & Hove Albion	S	H
Wed., " 26	Watford	L	A
Sat., " 29	Northampton	S	L
1907			
Sat., Jan. 5	Queen's Park Rangers	L	H
Sat., " 12	Fulham	S	L
Sat., " 19	Hastings & St. Leonards U.	S	L
Wed., " 23	Southampton	L	H
Sat., " 26	West Ham	S	L
Sat., Feb. 2	Tottenham Hotspur	L	H
Sat., " 9	Luton	L	H
Wed., " 13	Swindon	S	L
Sat., " 16	Swindon	S	L
Sat., " 21	Leyton	L	A
Thur., " 23	Norwich City	S	L
Sat., " 23	New Brompton	S	L
Sat., " 27	Luton	L	A
Wed., Mar. 2	Bristol Rovers	S	L
Sat., " 9	Brighton & Hove Albion	L	A
Sat., " 13	Brentford	S	L
Wed., " 16	Hastings & St. Leonards U.	S	L
Sat., " 20	Hastings & St. Leonards U.	S	L
Sat., " 23	Millwall	S	L
Sat., " 23	Reading	S	L
Fri., " 29	Leyton	S	L
Sat., " 30	Leyton	S	L
Mon., Apr. 1	Watford	L	H
Sat., " 6	Portsmouth	S	L
Thur., " 11	Norwich City	S	L
Sat., " 18	New Brompton	S	L
Sat., " 20	(Final) Plymouth Argyle	S	L
Sat., " 20	Brighton & Hove Albion	S	L
Sat., " 27	Brighton & Hove Albion	S	L

Are you a Football Enthusiast?

If so, in order to follow the game in all weathers

- YOU WANT Good Substantial Clothing.
 YOU WANT Garments that will not Shrink or Fade
 YOU WANT Garments that give Warmth without Weight.
 YOU WANT Garments that look Comfortable and are Comfortable.

IN FACT
 YOU WANT to go to

HARMER, BROS.,

THE EXPERT

ENGLISH TAILORS.

4, Westow Hill,

UPPER NORWOOD, S.E.

Who Tailor for some of the best dressed gentlemen in the District.

Whose charges are reasonable and who give the best value obtainable.

Who have proved their ability to please several of the players in the Crystal Palace F.C., and can please you.

PATTERNS SENT POST FREE ON APPLICATION.

LOUNGE SUITS from 38/- to measure.
 OVERCOATS " 30/- " "
 TROUSERS " 10/6 " "

Crystal Palace F.C.

First Team Fixtures,

SEASON 1906-7.

SOUTHERN LEAGUE.

DIARY.

Sept. 1st, NORTHAMPTON. Palace	
Sept. 8th, QUEEN'S PARK RANGERS. Away.	
Sept. 15th, FULHAM, Palace.	

Sept. 19th, READING. Palace.	
Sept. 22nd, SOUTHAMPTON. Away.	
Sept. 29th, WEST HAM UNITED. Palace.	
Oct. 6th, TOTTENHAM HOTSPUR. Away.	
Oct. 13th, SWINDON, Palace.	
Oct. 20th, NORWICH CITY. Away.	

Oct. 27th, LUTON. Palace.	
Nov. 3rd, BRISTOL ROVERS. Away.	
Nov. 10th, BRENTFORD. Away.	
Nov. 17th, MILLWALL. Palace.	
Nov. 24th, LEYTON Away.	
Dec. 1st, PORTSMOUTH Palace.	

Dec 8th,
NEW BROMPTON.
Away.

Dec. 15th,
PLYMOUTH
ARGYLE.
Palace.

Dec. 22nd,
BRIGHTON & HOVE
ALBION.
Away.

Dec. 26th,
WATFORD.
Away.

Dec. 29th,
NORTHAMPTON.
Away.

Jany. 5th,
QUEEN'S PARK
RANGERS.
Palace.

Jany. 19th,
FULHAM.
Away.

Jany. 26th,
SOUTHAMPTON
Palace.

Feb. 2nd,
WEST HAM
UNITED
Away.

Feb. 9th,
TOTTENHAM
HOTSPUR
Palace.

Feb. 16th,
SWINDON
Away.

Feb. 23rd,
NORWICH CITY
Palace.

Mar. 2nd,
LUTON
Away.

Mar. 9th,
BRISTOL ROVERS
Palace.

Mar. 16th,
BRENTFORD
Palace.

Mar. 23rd,
MILLWALL
Away.

Mar. 29th,
Good Friday.
READING
Away.

Mar. 30th,
LEYTON
Palace.

White Hart Hotel,

CHURCH ROAD,

Upper Norwood, S.E.

Proprietor : **W. E. EVERARD.**

A Speciality



LUNCHEONS,

DINNERS AND

TEAS. . . .

SPACIOUS

BILLIARD

SALOON.

COMFORTABLE SALOON BAR
AND LOUNGE.

A LARGE ROOM FOR CONCERTS or . . .
PRIVATE DINNER PARTIES

April 1st, Easter Monday. WATFORD Palace.	
April 6th, PORTSMOUTH Away.	
April 13th, NEW BROMPTON Palace.	
April 20th, PLYMOUTH ARGYLE Away.	
April 27th, BRIGHTON & HOVE ALBION Palace.	

UNITED LEAGUE.

Oct. 8th, LUTON Away.	
Oct. 17th, WATFORD Away.	
Oct. 31st, LEYTON Palace.	
Nov. 7th, BRIGHTON & HOVE Palace.	
Nov. 12th, NEW BROMPTON Away.	

Nov. 21st,
WATFORD
Palace.

Nov. 28th,
NORWICH CITY
Palace.

Jany. 23rd,
HASTINGS AND
ST LEONARDS
UNITED
Away.

Feb. 13th,
LUTON
Palace.

Feb. 21st,
LEYTON
Away.

Feb. 27th,
NEW BROMPTON
Palace.

Mar. 13th,
BRIGHTON & HOVE
Away.

Mar. 20th,
HASTINGS AND
ST. LEONARDS
UNITED
Palace.

April 11th,
NORWICH CITY
Away.

ENGLISH CUP DATES.

INTERMEDIATE ROUND—December 8th.

COMPETITION PROPER—

Jan. 12th. Feb 2nd, 23rd. March 9th, 23rd.

FINAL—April 20th.

FRIENDLY.

Wed., Sept. 12th. — CRYSTAL PALACE v. CHELSEA.

The Largest and most complete
Stock of—
WATCHES, CLOCKS,
JEWELLERY and
FANCY GOODS
in the District.
STORE PRICES.

Gaydon & Sons
16, 18 & 20, WESTOW STREET,
NORWOOD, S.E.

5 PER CENT. CASH DISCOUNT.

NOTED FOR WATCHES:
STRONG RELIABLE LEVERS from **12/6.**

TELEPHONE: 182 Syd.

TELEGRAMS: "Gaydon, Norwood."

RESERVE TEAM FIXTURES, SEASON 1906-7.

Date.	Opponents.	Where Played	Goals.	
			For.	Agst.
Sept. 8	Catford Southend ...	(F) H		
" 15	Croydon ...	(F) A		
" 22	Chelsea Reserves ...	(L.L) H		
" 29	Fulham Reserves ...	(L.L) A		
Oct. 6	Tottenham Hotspur Res.	(L.L) H		
" 13	Woolwich Arsenal Res.	(L.L) A		
" 20	Fulham Reserves ...	(L.L) H		
" 27	Catford Southend ...	(F) A		
Nov. 3	West Ham Reserves	(L.L) H		
" 10	Brentford Reserves ...	(L.L) H		
" 17	Chelsea Reserves ...	(L.L) A		
" 24	Leyton Reserves ...	(L.L) H		
Dec. 8	Clapton Orient Reserves	(L.L) A		
" 22	Croydon ...	(F) H		
" 25	Clapham ...	(F) A		
" 29	Redhill... ..	(F) H		
Jan. ¹⁹⁰⁷ 5	Queen's Park Rangers	(L.L) A		
" 19	Queen's Park Rangers	(L.L) H		
Feb. 2	Bromley	(F) H		
" 9	Tottenham Hotspur Res.	(L.L) A		
" 16	Woolwich Arsenal Res.	(L.L) H		
" 23	Clapham	(F) H		
Mar. 16	Brentford Reserves ...	(L.L) A		
" 29	West Ham Reserves...	(L.L) A		
" 30	Leyton Reserves ...	(L.L) A		
April 6	Clapton Orient Reserves	(L.L) H		
" 13	Bromley	(F) A		
" 27	Redhill	(F) A		

L.L. London League (Premier Division).

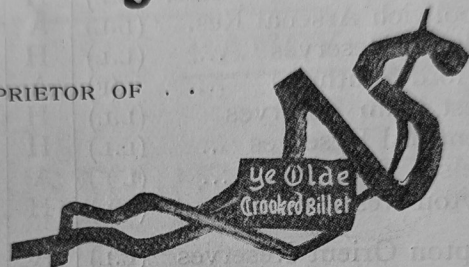
F. Friendly.

NOTE: All matches of reserve team are played on Saturdays with the exception of Christmas Day and Good Friday.

"YE OLDE CROOKED BILLET."

A. L. JENNINGS,

PROPRIETOR OF



99, Beckenham Road, Penge.

Hot & Cold Luncheons,
Teas, etc.

Three Minutes' walk from PENGE CRYSTAL PALACE Entrance.

CLUBS AND SOCIETIES HELD HERE.

Penge Lodge of Instruction.	Hearts of Oak Slate Club.
M.U.I.O.O.F. Paxton Lodge.	A.O.D. 847.
R.A.O.B., G.B.S., Woodbine Lodge.	Operative Bricklayers' Society.
United Builders' Labour Union.	Penge United Cricket Club.
Loan Society.	Bowling Green.

AN ORDINARY DAILY.

COMPLETE FIXTURE LIST of
SOUTHERN LEAGUE.

SEPTEMBER.

1 Tottenham H v W Ham U	15 Portsmouth v Reading
1 Swindon v Southampton	15 N Brom'ton v Bright'n & H A.
1 Norwich C v Fulham	15 Plymouth A v Bristol Rovers
1 Luton v Queen's P R	17 Swindon v Queen's Park R
1 C Palace v Northampton	19 Crystal Palace v Reading
1 Brentford v Watford	22 West Ham U v Luton
1 Millwall v Reading	22 Tottenham H v Norwich C
1 Leyton v Brighton & Hove A	22 Bristol Rovers v Swindon
1 Portsmouth v Plymouth A	22 Southampton v Crystal P
1 N Brompton v Bristol R	22 Fulham v Brentford
8 West Ham U v Swindon	22 Watford v Portsmouth
8 Bristol R v Tottenham H	22 Northampton v Leyton
8 Southampton v Norwich C	22 Queen's Park R v Millwall
8 Fulham v Luton	22 Brighton & H Alb v Plym Arg.
8 Queen's P R v Crystal P	22 Reading v New Brompton
8 Watford v Millwall	24 Bristol R v West Ham U
8 Reading v Leyton	24 Tottenham H v Fulham
8 B and H A v Portsmouth	29 Luton v Tottenham H
8 Plymouth A v N Brompton	29 Crystal P v West Ham U
15 Norwich C v West Ham U	29 Norwich C v Swindon
15 Swindon v Tottenham H	29 Brentford v Southampton
15 Luton v Southampton	29 Millwall v Fulham
15 Crystal Palace v Fulham	29 Leyton v Queen's Park R
15 Brentford v Queen's Park R	29 Portsmouth v Northampton
15 Millwall v Northampton	29 New Brompton v Watford
15 Leyton v Watford	29 Plymouth A v Reading
	29 Brighton & H A v Bristol R

OCTOBER.

3 Swindon v Fulham	20 West Ham U v Leyton
6 West Ham U v Brentford	20 Tottenham Hotspur v Millwall
6 Tottenham H v Crystal Palace	20 Swindon v Brentford
6 Swindon v Luton	20 Bristol Rovers v Luton
6 Bristol Rovers v Norwich C	20 Norwich City v Crystal Palace
6 Southampton v Millwall	20 Southampton v Portsmouth
6 Fulham v Leyton	20 Fulham v New Brompton
6 Queen's Park R v Portsmouth	20 Queen's Park R v Plymouth A
6 Northampton v New Brompton	20 Northampton v Brighton & H A
6 Watford v Plymouth Argyle	20 Watford v Reading
6 Reading v Brighton & Hove A	27 Portsmouth v West Ham U
13 Millwall v West Ham United	27 Leyton v Tottenham Hotspur
13 Brentford v Tottenham H	27 Millwall v Swindon
13 Crystal Palace v Swindon	27 Brentford v Norwich City
13 Luton v Norwich City	27 Crystal Palace v Luton
13 Leyton v Southampton	27 New Brompton v Southampton
13 Portsmouth v Fulham	27 Plymouth Argyle v Fulham
13 New Brompton v Queen's Park R	27 Brighton & Hove A v Queen's Park Rangers
13 Plymouth A v Northampton	27 Reading v Northampton
13 Brighton & Hove A v Watford	27 Watford v Bristol Rovers
13 Reading v Bristol Rovers	29 Fulham v Tottenham Hotspur
15 West Ham U v Bristol Rovers	

NOVEMBER.

3	West Ham U v New Brompton	17	West Ham U v Brighton & H A
3	Tottenham H v Portsmouth	17	Tottenham H v Plymouth A
3	Swindon v Leyton	17	Swindon v New Brompton
3	Norwich City v Millwall	17	Norwich City v Portsmouth
3	Luton v Brentford	17	Luton v Leyton
3	Bristol Rovers v Crystal Palace	17	Crystal Palace v Millwall
3	Southampton v Plymouth A	17	Bristol Rovers v Brentford
3	Fulham v Brighton & Hove A	17	Southampton v Reading
3	Queen's Park R v Reading	17	Fulham v Watford
3	Northampton v Watford	17	Queen's Park R v Northampton
10	Plymouth A v West Ham U	24	Reading v West Ham United
10	New Brompton v Tottenham H	24	Brighton & H A v Tottenham H
10	Portsmouth v Swindon	24	Plymouth A v Swindon
10	Leyton v Norwich City	24	New Brompton v Norwich City
10	Brentford v Crystal Palace	24	Portsmouth v Luton
10	Millwall v Luton	24	Leyton v Crystal Palace
10	Brighton & H A v Southampton	24	Millwall v Brentford
10	Reading v Fulham	24	Watford v Southampton
10	Watford v Queen's Park R	24	Northampton v Fulham
10	Northampton v Bristol Rovers	24	Queen's P R v Bristol Rovers

DECEMBER.

1	West Ham United v Watford	22	Watford v Norwich City
1	Tottenham Hotspur v Reading	22	Reading v Luton
1	Swindon v Brighton and H A	22	Brighton and H A v Crystal P
1	Luton v New Brompton	22	Plymouth Argyle v Brentford
1	Crystal Palace v Portsmouth	22	New Brompton v Millwall
1	Brentford v Leyton	22	Portsmouth v Leyton
1	Bristol Rovers v Millwall	22	Bristol R v Southampton
1	Southampton v Northampton	25	West Ham U v Southampton
1	Fulham v Queen's Park R	25	Luton v Watford
1	Norwich City v Plymouth A	25	Brentford v Brighton and H A
8	New Brompton v West Ham U	25	Portsmouth v New Brompton
8	Reading v Swindon	25	Norwich City v Northampton
8	Plymouth Argyle v Luton	26	Luton v Northampton
8	Portsmouth v Brentford	26	Watford v Crystal Palace
8	Queen's Park R v Southampton	26	Reading v Brentford
8	Fulham v Bristol Rovers	26	Portsmouth v Bristol Rovers
8	Leyton v Millwall	26	New Brompton v Leyton
8	Brighton and H A v Norwich C	26	Queen's Pk R v Norwich C
15	West Ham U v Queen's Park R	26	Southampton v Tottenham H
15	Tottenham H v Northampton	26	Northampton v Norwich C
15	Swindon v Watford	27	West Ham U v Tottenham H
15	Norwich City v Reading	29	Southampton v Swindon
15	Luton v Brighton and Hove A	29	Fulham v Norwich City
15	Crystal Palace v Plymouth A	29	Queen's Park R v Luton
15	Brentford v New Brompton	29	Northampton v Crystal P
15	Southampton v Fulham	29	Watford v Brentford
15	Leyton v Bristol Rovers	29	Brighton and H A v Leyton
15	Millwall v Portsmouth	29	Plymouth A v Portsmouth
22	Fulham v West Ham United	29	Bristol R v New Brompton
22	Queen's Park R v Tottenham H	29	Reading v Millwall
22	Northampton v Swindon		

JANUARY (1907).

5	Swindon v West Ham U	19	Northampton v Millwall
5	Tottenham H v Bristol R	19	Watford v Leyton
5	Norwich C v Southampton	19	Reading v Portsmouth
5	Luton v Fulham	19	B and H A v N Brompton
5	Brentford v Northampton	19	Bristol R v Plymouth A
5	Millwall v Watford	26	Luton v West Ham U
5	Leyton v Reading	26	Norwich C v Tottenham H
5	Portsmouth v B and H A	26	Swindon v Bristol R
5	N Brompton v Plymouth A	26	Crystal Palace v Southampton
5	Crystal P v Queen's P R	26	Brentford v Fulham
19	West Ham U v Norwich C	26	Millwall v Queen's P R
19	Tottenham H v Swindon	26	Leyton v Northampton
19	Southampton v Luton	26	Portsmouth v Watford
19	Fulham v Crystal Palace	26	New Brompton v Reading
19	Queen's P R v Brentford	26	Plymouth A v B and H A

FEBRUARY.

2	West Ham U v Crystal Palace	15	West Ham U v Millwall
2	Tottenham H v Luton	16	Tottenham H v Brentford
2	Swindon v Norwich C	16	Norwich City v Luton
2	Southampton v Brentford	16	Swindon v Crystal Palace
2	Fulham v Millwall	16	Southampton v Leyton
2	Queen's P R v Leyton	16	Queen's P R v N Brompton
2	Northampton v Portsmouth	16	Northampton v Plymouth A
2	Watford v New Brompton	16	Watford v Brighton and H A
2	Reading v Plymouth A	16	Bristol Rovers v Reading
2	Bristol R v B and H A	16	Fulham v Portsmouth
9	Brentford v West Ham U	23	Leyton v West Ham U
9	Crystal P v Tottenham H	23	Millwall v Tottenham H
9	Luton v Swindon	23	Brentford v Swindon
9	Norwich C v Bristol R	23	Crystal Palace v Norwich
9	Millwall v Southampton	23	Luton v Bristol Rovers
9	Leyton v Fulham	23	Portsmouth v Southampton
9	Portsmouth v Queen's P R	23	New Brompton v Fulham
9	N Brompton v Northampton	23	Plymouth A v Queen's P R
9	Plymouth A v Watford	23	Bright'n and H A v Northamp't'n
9	Brighton and H A v Reading	23	Reading v Watford

MARCH.

2	West Ham U v Portsmouth	9	Plymouth A v Southampton
2	Tottenham H v Leyton	9	Brighton and H A v Fulham
2	Swindon v Millwall	9	Reading v Queen's P R
2	Norwich C v Brentford	9	Watford v Northampton
2	Luton v Crystal Palace	16	West Ham U v Plymouth A
2	Southampton v N Brompton	16	Tottenham H v N Brompton
2	Fulham v Plymouth A	16	Swindon v Portsmouth
2	Queen's P R v B and H A	16	Norwich C v Leyton
2	Northampton v Reading	16	Luton v Millwall
2	Bristol R v Watford	16	Crystal Palace v Brentford
7	Northampton v West Ham U	16	Southamp't'n v Bright'n and H A
9	Portsmouth v Tottenham H	16	Fulham v Reading
9	Leyton v Swindon	16	Queen's P R v Watford
9	Millwall v Norwich C	16	Bristol R v Northampton
9	Brentford v Luton	23	Brighton and H A v W Ham U
9	Crystal Palace v Bristol R	23	Plymouth A v Tottenham H

- 23 New Brompton v Swindon
- 23 Portsmouth v Norwich C
- 23 Leyton v Luton
- 23 Millwall v Crystal Palace
- 23 Brentford v Bristol Rovers
- 23 Watford v Fulham
- 23 Northampton v Queen's P R
- 23 Reading v Southampton
- 23 Watford v Luton
- 29 Reading v Crystal Palace
- 29 Brighton and H A v Brentford
- 29 Fulham v Swindon
- 29 Tottenham H v Southampton

- 29 Leyton v New Brompton
- 29 Bristol R v Portsmouth
- 29 Norwich C v Queen's Park R
- 30 West Ham U v Reading
- 30 Tottenham H v Bright'n and H A
- 30 Swindon v Plymouth A
- 30 Luton v Portsmouth
- 30 Crystal Palace v Leyton
- 30 Brentford v Millwall
- 30 Norwich C v New Brompton
- 30 Southampton v Watford
- 30 Fulham v Northampton
- 30 Bristol R v Queen's P R

APRIL.

- 1 Southampton v West Ham U
- 1 Northampton v Luton
- 1 Crystal P v Watford
- 1 Brentford v Reading
- 1 Queen's P R v Swindon
- 1 N Brompton v Portsmouth
- 6 Watford v West Ham U
- 6 Reading v Tottenham H
- 6 Brighton and H A v Swindon
- 6 Plymouth A v Norwich C
- 6 N Brompton v Luton
- 6 Portsmouth v Crystal P
- 6 Leyton v Brentford
- 6 Millwall v Bristol R
- 6 Northampton v Southampton
- 6 Queen's P R v Fulham
- 13 West Ham U v Northampton
- 13 Tottenham H v Watford
- 13 Swindon v Reading
- 13 Norwich v Brighton & H A
- 13 Luton v Plymouth A
- 13 Crystal P v N Brompton
- 13 Brentford v Portsmouth

- 13 Millwall v Leyton
- 13 Bristol R v Fulham
- 13 Southampton v Queen's P R
- 20 Queen's P R v West Ham U
- 20 Northampton v Tot H
- 20 Watford v Swindon
- 20 Reading v Norwich City
- 20 Brighton and H A v Luton
- 20 Plymouth A v Crystal Palace
- 20 N Brompton v Brentford
- 20 Portsmouth v Millwall
- 20 Bristol R v Leyton
- 20 Fulham v Southampton
- 27 West Ham U v Fulham
- 27 Tottenham H v Queen's P R
- 27 Swindon v Northampton
- 27 Norwich City v Watford
- 27 Luton v Reading
- 27 Brentford v Plymouth A
- 27 Millwall v N Brompton
- 27 Leyton v Portsmouth
- 27 Crystal P v Brighton and H A
- 27 Southampton v Bristol R

- * N Brompton v Crystal P
- * Plymouth A v Millwall

- * Millwall v Brighton and H A
- * Leyton v Plymouth A

* It is left for the club themselves to fix up the undated matches, and also to transfer matches falling on Cup-tie dates.

UNITED LEAGUE.

SEPTEMBER.

- 3 New Brompton v Hastings and St. Leonards United
- 3 Leyton v Norwich City
- 5 Brighton & H A v Luton
- 10 Luton v Watford
- 10 New Brompton v Norwich C
- 19 Watford v Luton
- 24 Luton v Brighton & H A
- 26 Watford v Norwich C
- 27 Leyton v New Brompton

OCTOBER.

- 1 New Brompton v Luton
- 3 Watford v Leyton
- 4 Leyton v Brighton and H A
- 4 Norwich C v New Brompton
- 8 Luton v Crystal Palace
- 8 New Brompton v Leyton
- 11 Norwich C v N Brompton
- 11 Leyton v Watford
- 17 Brighton and H A v Norwich C
- 17 Watford v Crystal Palace
- 17 Hastings and St L U v Leyton
- 22 N Brompton v B and H A
- 22 Luton v Leyton
- 25 Norwich City v Watford
- 29 New Brompton v Watford
- 31 Brighton and H A v Hastings and St Leonards U
- 31 Crystal Palace v Leyton

NOVEMBER.

- 1 Norwich C v Luton
- 5 Luton v New Brompton
- 7 Crystal P v Brighton & H A
- 7 Watford v Hastings and St. Leonards U
- 12 New Brompton v Crystal P
- 12 Luton v Norwich C
- 14 Brighton and H A v Watford
- 21 Bright'n and H A v N Brompt'n
- 21 Crystal P v Watford
- 28 Crystal P v Norwich City
- 28 Hastings and St L U v Watford

DECEMBER.

- 5 Hastings and St L U v Norwich
- 10 Luton v Hastings and St L U
- 12 Brighton and H A v Leyton
- 13 Leyton v Hastings and St L U

JANUARY (1907).

- 9 Hastings and St Leonards U v Brighton and Hove Albion
- 23 Hastings and St L U v Cryst P
- 24 Leyton v Luton

FEBRUARY.

- 6 Hastings and St L U v Luton
- 13 Crystal Palace v Luton
- 21 Leyton v Crystal Palace
- 27 Crystal Palace v N Brompton

MARCH.

- 13 Brighton and H A v Crystal P
- 20 Cryst P v Hastings and St L U
- 20 Watford v New Brompton

APRIL.

- 2 Norwich City v Leyton
- 3 Hastings and St Leonards U v New Brompton
- 10 Watford v Brighton and H A
- 11 Norwich City v Crystal Palace
- 18 Norwich v Hastings and St L U

LONDON LEAGUE—Premier Division.

SEPTEMBER.

- 1 Woolwich A v Tottenham H
- 1 West Ham v Brentford
- 8 Tottenham H v Woolwich A
- 8 Chelsea v Queen's Park R
- 15 West Ham v Clapton Orient
- 17 Queen's P R v Tottenham H
- 22 Leyton v Woolwich Arsenal
- 22 Brentford v Fulham
- 22 Crystal Palace v Chelsea
- 29 Fulham v Crystal Palace
- 29 Queen's P R v Leyton

OCTOBER.

- | | |
|--------------------------------|------------------------------------|
| 1 Tottenham v Clapton Orient | 13 Queen's P R v Brentford |
| 6 Brentford v West Ham | 18 Chelsea v Fulham |
| 6 Leyton v Fulham | 20 Leyton v West Ham |
| 6 Clapton Orient v Queen's P R | 20 Crystal Palace v Fulham |
| 6 Crystal Palace v Tottenham H | 20 Brentford v Queen's Park R |
| 8 Tottenham H v Queen's P R | 25 Clapton Orient v Crystal Palace |
| 13 Woolwich A v Crystal Palace | 27 Woolwich Arsenal v Leyton |

NOVEMBER.

- | | |
|--------------------------------|---------------------------------|
| 3 Crystal Palace v West Ham | 15 Clapton Orient v Tottenham H |
| 3 Chelsea v Tottenham Hotspur | 17 Brentford v Woolwich Arsenal |
| 10 Woolwich A v Clapton Orient | 17 Chelsea v Crystal Palace |
| 10 Crystal Palace v Brentford | 24 Crystal Palace v Leyton |

DECEMBER.

- | | |
|---------------------------------|--------------------------------|
| 1 Clapton Orient v West Ham | 22 Woolwich A v Queen's Park R |
| 1 Queen's Park Rangers v Fulham | 22 Leyton v Clapton Orient |
| 1 Leyton v Brentford | 25 Woolwich Arsenal v Fulham |
| 8 West Ham v Tottenham H | 25 Chelsea v West Ham |
| 8 Brentford v Clapton Orient | 26 Fulham v Woolwich Arsenal |
| 15 Queen's Park R v West Ham | 29 Tottenham H v West Ham |
| 15 Clapton Orient v Chelsea | |

JANUARY (1907).

- | | |
|---------------------------------|---------------------------------|
| 5 Fulham v Brentford | 21 Fulham v Clapton Orient |
| 5 Queen's P R v Crystal Palace | 26 Woolwich Arsenal v Brentford |
| 12 Chelsea v Leyton | 26 Fulham v Chelsea |
| 19 Crystal Palace v Queen's P R | |

FEBRUARY.

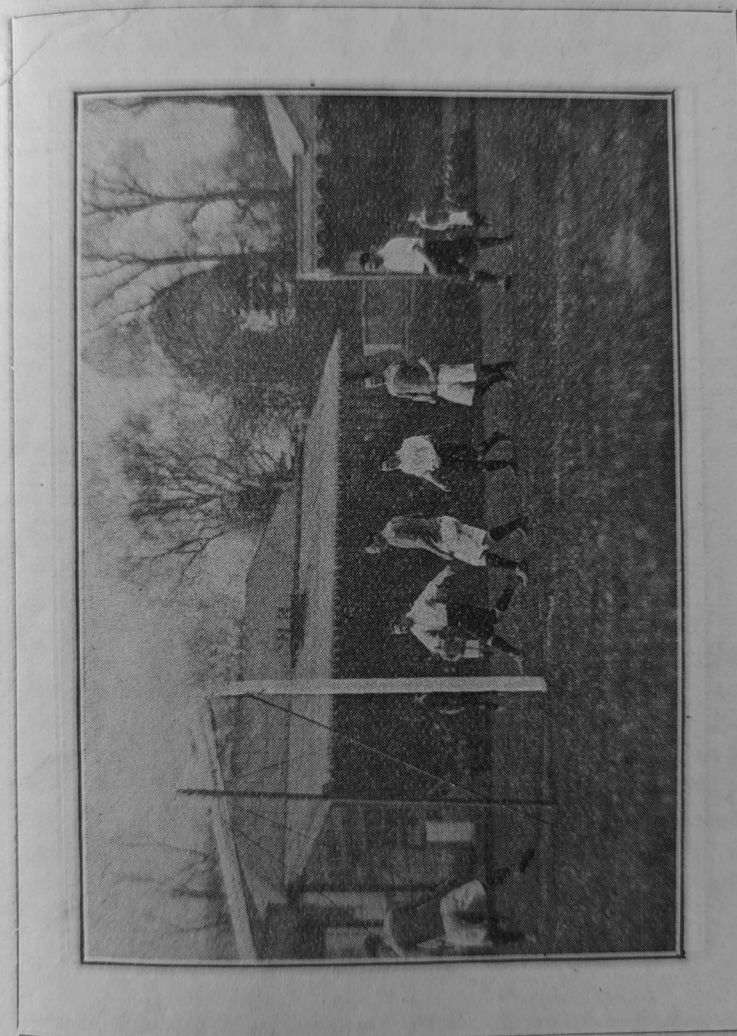
- | | |
|---------------------------------|---------------------------------|
| 2 Leyton v Queen's Park Rangers | 11 Brentford v Chelsea |
| 7 Chelsea v Clapton Orient | 16 Crystal Palace v Woolwich A |
| 9 Woolwich Arsenal v Chelsea | 23 West Ham v Leyton |
| 9 Fulham v Leyton | 23 Tottenham H v Chelsea |
| 9 Tottenham H v Crystal Palace | 23 Queen's P R v Clapton Orient |
| 11 West Ham v Fulham | 25 Fulham v West Ham |

MARCH.

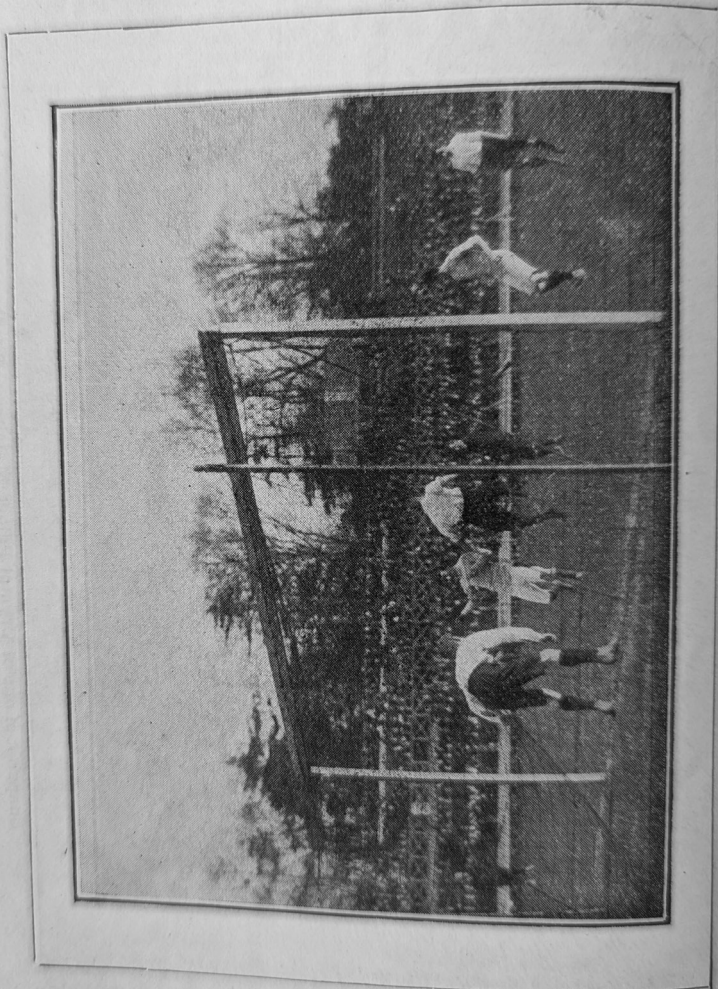
- | | |
|--------------------------------|-------------------------------|
| 2 Chelsea v Woolwich Arsenal | 18 Woolwich A v West Ham |
| 4 West Ham v Woolwich Arsenal | 23 Queen's Park R v Chelsea |
| 7 Clapton Orient v Fulham | 29 West Ham v Crystal Palace |
| 9 Tottenham H v Brentford | 29 Leyton v Tottenham Hotspur |
| 11 Chelsea v Brentford | 30 Leyton v Crystal Palace |
| 16 Clapton Orient v Woolwich A | 30 Clapton Orient v Brentford |
| 16 Brentford v Crystal Palace | |

APRIL.

- | | |
|---------------------------------|------------------------------|
| 1 West Ham v Chelsea | 6 Brentford v Leyton |
| 1 Tottenham H v Leyton | 20 West Ham v Queen's Park R |
| 2 Leyton v Chelsea | 27 Queen's P R v Woolwich A |
| 2 Brentford v Tottenham Hotspur | 27 Clapton Orient v Leyton |
| 6 Fulham v Queen's Park R | Unfixed Tottenham H v Fulham |
| 6 Crystal Palace v Clapton O | " Fulham v Tottenham H |



Snapshot of one of Crystal Palace Matches.—Needham scoring.



Snapshot of one of Crystal Palace Matches.—Walker clearing.

SOUTHERN LEAGUE, 1905-6.

	Pld.	Won	Lost	Drn.	For	Agst.	Fts.
Fulham.. ..	34	19	3	12	44	15	50
Southampton ..	34	19	8	7	58	39	45
Portsmouth	34	17	8	9	61	35	43
Luton	34	17	10	7	64	40	41
Plymouth Argyle .	34	16	11	7	51	33	39
Tottenham Hotspr	34	16	11	7	46	29	39
Norwich City ..	34	13	11	10	46	38	36
Bristol Rovers ..	34	15	14	5	56	56	35
Brentford	34	14	13	7	43	52	35
Reading	34	12	13	9	53	46	33
West Ham	34	14	15	5	42	39	33
Millwall	34	11	12	11	38	41	33
Queen's Park Rngs	34	12	15	7	57	43	31
Watford	34	8	16	10	38	56	26
Brighton	34	9	18	7	30	55	25
Swindon	34	8	17	9	31	52	25
New Brompton ..	34	7	19	8	20	62	22
Northampton ..	34	8	21	5	32	79	21

IMPORTANT.

It is respectfully suggested to followers of the Palace team that a copy of this handbook should be kept as the foregoing resume will, in all probability, be continued year after year and will eventually form a very interesting and valuable history of the club. If notes are made in the blank diary included with the first team's fixtures the book will prove of additional value, especially when bound in cheap form.

Additional Copies of this Football Annual may be obtained through all the leading sources.

Extracts from Laws of the Game, with Comments.

All followers of the game are fully acquainted with the bulk of the rules and regulations, but there are times when they desire to refresh their memory on certain points and the following have been selected to supply that need:—

The whole of the ball must have passed over the goal-line, or touch-line, before it is out of play.

The player throwing the ball in must stand on the touch-line facing the field of play, and shall throw the ball in over his head with both hands in any direction, and it shall be in play when thrown in. (NOTE.—This law is complied with if the player has any part of both feet on the line when he throws the ball in).

OFF-SIDE.

When a player plays the ball, or throws it in from touch, any player of the same side who at such moment of playing or throwing-in is nearer to his opponents' goal-line is out of play, and may not touch the ball himself, nor in any way whatever interfere with an opponent or with the play, until the ball has been again played, unless there are at such moment of playing or throwing in at least three of his opponents nearer their own goal-line. A player is not out of play in the case of a corner-kick, or when the ball is kicked off from goal, or when it has been last played by an opponent.

(From the Referee's Chart).

The point to notice is not where a player is when he plays the ball, but where he is at the moment it is played by a player of the same side. In the rush of a game a Referee is apt to lose sight of the positions of the field at every kick, yet he ought to educate himself to intuitively fix each change on his mind. If a player is behind the ball when it is played he cannot possibly be off-side, but if he is in front of it he is liable to be so. The only three occasions on which a player cannot be off-side are when an opponent last plays the ball, or when a corner-kick or a goal-kick is taken. This protection ceases the moment a second player plays the ball, so that a player not off-side when a corner-kick is taken, may, without having moved, be off-side as soon as the ball has been played. A player following up another of his own side who has the ball cannot be off-side. Players may be off-side when a free kick is taken, and when the ball is thrown in from touch. An opponent playing the ball puts a player on-side at once, but while standing off-side a player must not interfere in any way with an opponent or with the play. If a player is standing off-side he is

off-side until the ball is next played, even though sufficient opponents fall back to make three between him and their goal-line.

The International Board have enlarged the Law by the insertion of the words "or with the play." This makes it plain that a player, who is in an off-side position, is bound to keep out of the way of the play, and that he is liable to be penalised if in any manner his presence causes any interference with the play.

When the ball is kicked off from goal no player is off-side.

A player once off-side cannot put himself on-side. This can only be done for him in three ways.—(i.) If an opponent next plays the ball; (ii.) If he is behind the ball when it is next played by one of his own side; (iii.) If he has 3 opponents between him and their goal-line when the ball is played by one of his own side further from his opponents' goal than himself.

The ball hitting the goal-post or bar and rebounding does not put a player on-side who is "off-side" when the ball was last played.

Take care that when the ball is played by one of your own side you have 3 opponents between you and the goal-line or that you are behind the ball. Can anything be simpler? If your opponent plays the ball, or the ball touches him in any way, you are on-side no matter where you stand, but when standing off-side you have no right to impede an opponent nor to station yourself so near the goal-keeper, or any other opponent, as to hamper his movements, or obstruct his sight of the ball. When a player finds he is in an off-side position it is his duty to keep clear of the play and neither interfere with nor inconvenience an opponent, nor make a pretence of doing so.

The goal-keeper shall not be charged, except when he is holding the ball or obstructing an opponent, or when he has passed outside the goal area. He must not "walk about" bouncing the ball on the hand. After the second step he must be penalised. Bouncing the ball on the ground or throwing it well up into the air are not considered "carrying."

The corner flag must not be removed when a corner kick is taken.

Neither tripping, kicking, nor jumping at a player shall be allowed. A player (the goalkeeper excepted), shall not intentionally handle the ball under any pretence whatever. A player shall not use his hands to hold or push an opponent. A player shall not be charged from behind unless he is intentionally impeding an opponent. Cases of handling the ball and tripping, pushing, kicking or holding an opponent and charging an opponent from behind may so happen as to be considered unintentional, and when this is so, no penalty must be awarded.

A goal may be scored from a free kick which is awarded because of any infringement of the foregoing Law, but not from any other free kick. When a free kick has been taken, the ball shall not be again played by the kicker until it has been played by another player. The kick-off, corner-kick, and goal-kick shall be free kicks within the meaning of this Law.

The Referee shall enforce the Laws and decide all disputed points; and his decision on points of fact connected with the play shall be final. He shall act as timekeeper. In the event of any ungentlemanly behaviour on the part of any of the players, the offender or offenders shall be cautioned, and if the offence is repeated, or in case of violent conduct without any previous caution, the Referee shall have power to order the offending player or players off the field of play, and shall transmit the name or names of such player or players to his or their National Association, who shall deal with the matter. (Decision of the International Board: All reports by Referees to be made within three days after the occurrence). (Referees may in certain circumstances send their reports to the affiliated Association concerned). The Referee shall have power to allow for time wasted, to suspend the game when he thinks fit, and to terminate the game whenever, by reason of darkness, interference by spectators, or other cause, he may deem necessary; but in all cases in which a game is so terminated he shall report the same to the Association under whose jurisdiction the game was played, who shall have full power to deal with the matter. The Referee shall have power to award a free kick in any case in which he thinks the conduct of a player dangerous, or likely to prove dangerous, but not sufficient so as to justify him in putting in force the greater powers vested in him. The power of the Referee extends to offences committed when the play has been temporarily suspended, and when the ball is out of play.

In the event of a supposed infringement of the Laws, the ball shall be in play until a decision has been given.

In the event of any intentional infringement of Law 9 by the defending side within the penalty area, the Referee shall award the opponents a penalty kick (a), which shall be taken from the penalty kick mark, under the following conditions. All players, with the exception of the player taking the penalty kick and the opponents' goal-keeper, shall be outside the penalty area. The opponents' goal-keeper shall be within the goal area. The opponents' forward. The ball shall be in play when the kick is taken, and a goal may be scored from a penalty kick; but the ball shall not be again played by the kicker until it has been played by another player. If necessary, time of play shall be extended to admit of the penalty kick being taken. A free kick shall also be awarded to the

opposite side if the ball is not kicked forward, or is played a second time by the player who takes the penalty kick until it has been played by another player. The Referee may refrain from putting the provisions of this Law into effect in cases where he is satisfied, that by enforcing them he would be giving an advantage to the offending side.

A penalty kick can be awarded irrespective of the position of the ball at the time the offence is committed. In the event of the ball touching the goal-keeper before passing between the posts, when a penalty kick is being taken at the expiry of time, a goal is scored.

The penalty kick can only be awarded for the following seven offences, intentionally committed by a player of the defending side within the penalty area:—

1. Tripping an opponent.
2. Kicking an opponent.
3. Jumping at an opponent.
4. Handling the ball.
5. Holding an opponent.
6. Pushing an opponent.
7. Charging an opponent from behind.

PHYSICAL CULTURE

EVERY REQUISITE AT THE

**CENTRAL SPORTS
WAREHOUSE. . .**

1, Central Hill, Upper Norwood.

**FOOTBALL, BADMINTON,
HOCKEY, CRICKET, TENNIS,
AND CROQUET.**

All above supplied and REPAIRS done on the
Premises at MODERATE CHARGES.

A Few General Hints.

Referees—do your best to have the matches started punctually at the time appointed.

Players remember that you are paid to play. Be loyal to your club and supporters.

Spectators please put away the idea that your admission ticket entitles you to own the ground.

Players remember that it is impossible for a Referee to hope to please everybody. Remember his difficult position and do not make it more so.

"How's that?" cannot in any way be taken as an appeal.

Holding includes the obstruction of a player by the hand or any part of the arm extended from the body.

Let the Referee give "hands" on his own initiative.

The only time a player may be charged in the back is when he is facing his own goal and at the same time intentionally impeding an opponent.

Under no circumstances whatever must a player push an opponent with his hands or arms. Using the knee against an opponent is a most dangerous practice and should be severely punished.

Players cover your goal-keeper as much as possible.

Spectators always be loyal to your favourites and ring out encouraging cheers, but do not fail to cheer good play by the opposing side. Don't despair of your chosen club because of a defeat. Don't blame the referee for every defeat.

Get rid of the ball at once is naturally the best advice that can be given to a goal-keeper.

Referees are to refuse to sanction play if danger is likely to accrue to players from the state of the ground. As to the weather, they must use their own judgment, but not needlessly spoil sport.

Play a gentlemanly game. Don't allow yourself to lose your temper. Don't "talk." When you *do* claim say what for and not shout out "foul" which may mean one of a dozen offences. If "hands" say "hands," and so on. The Referee then knows what you want.

Don't stop at home when the team goes away. They want your support more than ever when on opponent's ground.

Let visitors go away with the impression that the Crystal Palace crowd are good sportsmen.

Whether at home or away, don't forget to shout "Play up, Glaziers!"

Records and Facts.

Professionalism was legalised in England in the summer of 1885, as the result of an agitation by the Lancashire clubs.

The record gate at an International match is £4,387 9s. 6d. for Scotland v. England, at Celtic Park, Glasgow, in 1900. The attendance was about 62,000.

The record gate money for an English League match is £1,558 1s. taken on the Aston Villa ground, on April 29, 1899. 41,357 paid for admission.

The record attendance for a match of any description at the Crystal Palace is 110,802 at the English Cup final of 1901.

The present English Cup is a modern vase. The original was stolen from a shop window in Birmingham in 1895, while Aston Villa were the holders.

Only two clubs have accomplished the double feat of winning both the League Championship and the English Cup in the same season: Preston North End in 1888-9, and Aston Villa in 1896-7.

The first recognised International match with Scotland took place on November 30th 1872 at Patrick, Glasgow, no goals being scored.

The oldest Association club is the Sheffield club, which was started in 1855.

For the first time since the English Cup final was taken to the Crystal Palace there was a replay at the Palace in 1902.

R. Hewitson, the Crystal Palace goalkeeper, played in every match of the club throughout the season 1905-6.

The Crystal Palace Football Team have supplied three internationals, but it occurred in the years 1873 and 1876. In the former year A. Morton was included in the international between England and Scotland, and in 1876 A. H. Savage and C. E. Smith represented the old country against Scotland.

The balance in last season's Football Cup-ties was divided as follows:—Association Cup—Everton, £2,492 9s. 9d.; Newcastle, £2,182 9s. 1d.; Liverpool, £654 17s. 2d.; Woolwich Arsenal, £344 16s. 5d. Amateur Cup—Oxford City, £111 1s. 11d.; New Crusaders, £66 3s. 11d.; Bishop Auckland, £238 10s. 8d.; Stockton, £196 12s. 7d.; total, £6,290 1s. 6d.

F. J. Wall, secretary of the Football Association, was formerly hon. sec. of the Middlesex F.A.

According to the official list, there are 2,674 players attached to the forty clubs in the First and Second Divisions of the Football League. Bristol City's 17 is the smallest number of retained players; Aston Villa has 90.

Telephone 821 Sydenham.

J. Russell & Sons, PHOTOGRAPHERS.

By Appointment to



HIS MAJESTY THE KING
AND
HER LATE MAJESTY QUEEN VICTORIA.

Official Photographers to the Crystal Palace.

Permanent STUDIO for Portraiture in SOUTH NAVE.

OPERATORS IN ATTENDANCE AT ANY TIME
OR BY APPOINTMENT.

ADMISSION TICKETS Free to intending Sitters.

Specialists in all out-door Photography at KIOSK
adjoining.

All kinds of
PICTURE POST CARDS, including Sports, etc.

Advertise in the

'Crystal Palace District Advertiser'

Publishing Office: 34, WESTOW STREET, NORWOOD, S.E.



Best Reports of . . . Palace Football Club's Matches



Small Advertisements:

26 Words 6d.

3 times 1s.